

INSTALLATION MANUAL

11609

Level of Difficulty

Easy

Installation difficulty levels are based on time and effort involved and may vary depending on the installer level of expertise, condition of the vehicle and proper tools and equipment.

Weight Carrying Capacity

Gross trailer weight (GTW)	2,000 lbs.
Tongue weight (TW)	200 lbs.

Parts List

Item	Qty	Description
1	1	Carriage bolt, 1/2"-13 x 1-3/4", grade 8
2	4	Hex bolt, M8-1.25 x 35mm, CL 10.9
3	1	Serrated-flange nut, 1/2" x 13
4	4	Conical-toothed washer, 3/8"
5	1	Square-hole spacer, 1/4" x 1-1/2" x 3"

Tools Required

Ratchet	Torque wrench
Socket, 3/4"	Flathead screwdriver
Socket, 12mm	Safety glasses
Socket, 13mm	--

* For a tools reference guide visit curtmfg.com/trailer-hitch-installation

WARNING

Never exceed the vehicle manufacturer's recommended towing capacity.

Product Photo



NOTICE

Visit www.curtmfg.com for a full-color copy of this instruction manual, as well as helpful videos, guides and much more!

Before you begin installation, read all instructions thoroughly.

Proper tools will improve the quality of installation and reduce the time required.

This installation requires you to lower the exhaust. You will be using existing weldnuts. No drilling is required.

Periodic inspection of the trailer hitch should be performed to ensure all mounting hardware remains tight and structural components are secure.

To help prevent damage to the product or vehicle, refer to the specified torque specifications when securing hardware during the installation process.

SAFETY INSTRUCTIONS

Safety glasses should be worn at all times while installing this product.

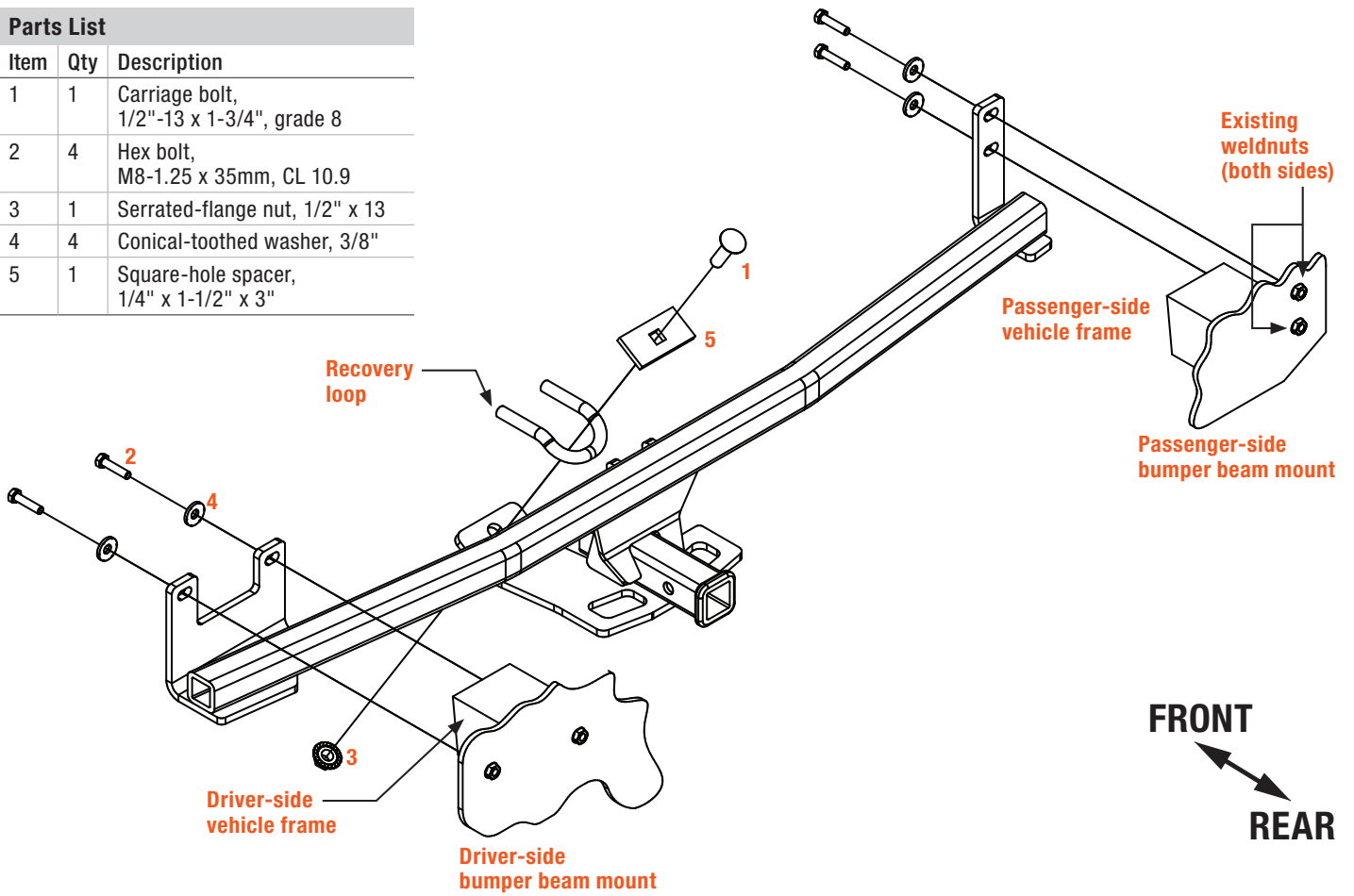
Product Registration and Warranty

CURT stands behind our products with industry-leading warranties. To get copies of the product warranties, register your purchase or provide feedback, visit: warranty.curtgroup.com/surveys

ASSEMBLY

Parts List

Item	Qty	Description
1	1	Carriage bolt, 1/2"-13 x 1-3/4", grade 8
2	4	Hex bolt, M8-1.25 x 35mm, CL 10.9
3	1	Serrated-flange nut, 1/2" x 13
4	4	Conical-toothed washer, 3/8"
5	1	Square-hole spacer, 1/4" x 1-1/2" x 3"



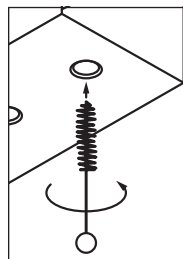
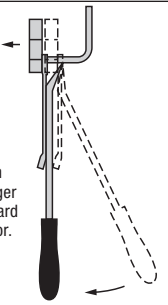
RUBBER ISOLATOR REMOVAL DIAGRAM

This technique can be used if exhaust hanger removal pliers are not available.

Using a 5/8" open end wrench, slide the wrench up to the rubber isolator, cradling the hanger rod as shown.

Place the flat edge of a pry bar between the wrench and the hanger stop or hanger rod. Then simply rotate the pry bar toward the wrench to remove the rubber isolator.

Note: Using a lubricant or soapy water on the hanger rod and the rubber isolator helps removal.

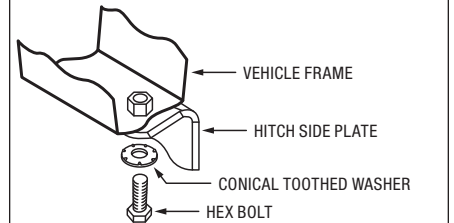


WELDNUT CLEANING

To remove debris from weldnuts in frame, spray lubricant or compressed air into the hole.

For heavy debris, use a wire brush. Take care not to damage threads.

CONICAL TOOTHED WASHER ORIENTATION



Step 1

Use a flathead screwdriver to remove two push fasteners from the bumper fascia near the wheel well on both sides.

Set aside for reinstallation in Step 7.



Step 2

Remove the plastic underbody body panel by removing the two push fasteners with a flathead screwdriver and unscrewing the two plastic flange nuts.

Set aside for reinstallation in Step 7.



Step 3

Use a flathead screwdriver to remove one push fastener from the fascia support ribs on the driver, center and passenger sides.

Set aside for reinstallation in Step 7.



Step 4

Lower the muffler by removing the exhaust hanger rod from the rubber isolator on both sides. Gently set the muffler on the rear axle.

Note: Remove the passenger-side exhaust hanger first. The passenger-side exhaust hanger is located closer to the exhaust tip. The driver-side exhaust hanger is located closer to front of the muffler.



RUBBER ISOLATOR REMOVAL DIAGRAM

This technique can be used if exhaust hanger removal pliers are not available.

Using a 5/8" open end wrench, slide the wrench up to the rubber isolator, cradling the hanger rod as shown.

Place the flat edge of a pry bar between the wrench and the hanger stop or hanger rod. Then simply rotate the pry bar toward the wrench to remove the rubber isolator.

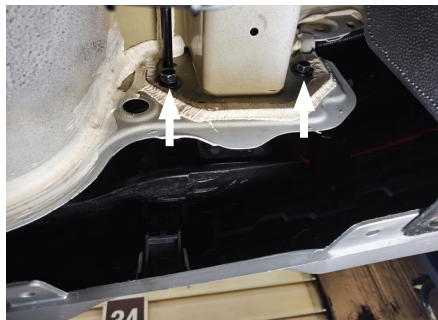
Note: Using a lubricant or soapy water on the hanger rod and the rubber isolator helps removal.

A technical diagram illustrating the removal technique. It shows a cross-section of the exhaust hanger rod, rubber isolator, and hanger stop. A 5/8" open end wrench is shown cradling the hanger rod. A pry bar is shown being inserted between the wrench and the hanger stop, with a dashed line indicating the rotation path to remove the rubber isolator.

Step 5

Use a 13mm socket to remove two bolts from the bumper beam mount both sides.

Note: On the driver side, there is one bolt on both sides of the vehicle frame. On the passenger side, two bolts are located on the passenger side of the vehicle frame.



Step 6

Raise the trailer hitch into position by sliding it over the exhaust first and gently pulling down on the fascia.



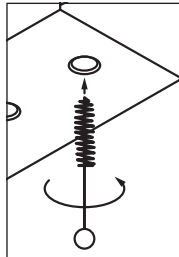
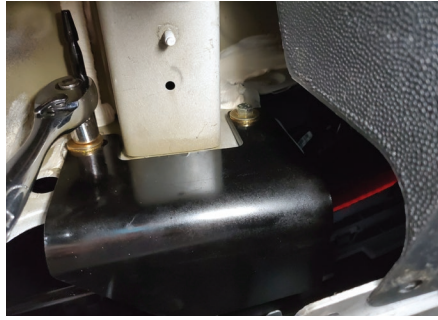
Step 7

Loosely install two of the provided M8 hex bolts (#2) with conical-toothed washers (#4) into the two weldnuts on the bumper beam mount on both sides. **Note:** The M8 bolts are installed in the same location as the bolts removed in Step 5.

Install the provided 1/2" carriage bolt (#1) with square-hole spacer (#5) in the top of the recovery loop, and loosely install the flange-nut (#3) to the trailer hitch.

Torque all M8 bolts to 23 lb-ft and the 1/2" nut to 110 lb-ft.

Reinstall all fasteners, plastic panel and muffler in Steps 1-4.

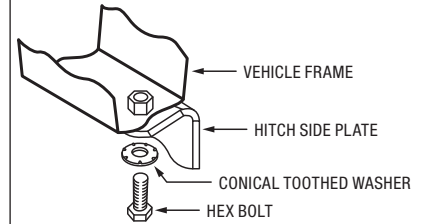


WELDNUT CLEANING

To remove debris from weldnuts in frame, spray lubricant or compressed air into the hole.

For heavy debris, use a wire brush. Take care not to damage threads.

CONICAL TOOTHED WASHER ORIENTATION



Final Installed Image



TOWING BASICS & SAFETY INFORMATION

For information on safely towing your trailer, visit [curtmfg.com/understanding-towing](https://www.curtmfg.com/understanding-towing).